



Stamperia

Since 1995
CLASSIC COLLECTION

BROCANTE ANTIQUES

Scrapbooking by Sara Alcobendas



www.stamperia.com

Stamperia



Sara Alcobendas

Step back in time with the enchanting Brocante Antiques collection, exclusively from Stamperia and designed by the talented Sara Alcobendas. Immerse yourself in the romantic nostalgia of vintage markets and the timeless allure of antiques. This collection is a treasure trove of designs, featuring elegant florals, classic timepieces. Each piece is infused with a sense of history and artistry, perfect for adding a touch of sophistication to your scrapbooking projects. With Brocante Antiques, let the memories of the past beautify your stories of today.



STAMPERS

link

VIDEO

collection

HAVE A COMPLETE LOOK
ALL THE COLLECTION'S ITEMS



LIVE

streaming

BE THE FIRST TO
DISCOVER ALL THE ITEMS



BUSINESS

link

B2B

link

VISIT OUR BUSINESS TO
BUSINESS, REGISTER AND BUY



DOWNLOAD

materials

CATALOGS, GRAPHICS, VIDEOS
TO PROMOTE YOUR BUSSINESS



BROCANTE
ANTIQUES



Discover our full range of products scrapbooking, journaling, mixed media



SCRAPBOOKING *pad*

SBBL 150

BLOCK 10 SHEETS DOUBLE FACE
CM 30.5 X 30.5 - 12"x12" - GR 190

SBBS 100

BLOCK 10 SHEETS DOUBLE FACE
CM 20.3 X 20.3 - 8"x 8" - GR 190



LARGE
cm
30 x 30
inches
12 x 12

SMALL
cm
20.3 x 20.3
inches
8 x 8

10 SHEETS
double
FACE

ACID free
sustainable
FOREST



SCRAPBOOKING PAD
inner pages





MAXI & SMALL *pad*

SBBXLB14 BLOCK 22 SHEETS SINGLE FACE
CM 30.5 X 30.5 - 12"x12" - GR 190

SBBSXB02 BLOCK 22 SHEETS SINGLE FACE
CM 20.3 X 20.3 - 8"x 8" - GR 190

SCRAPBOOKING MAXI PAD

inner pages

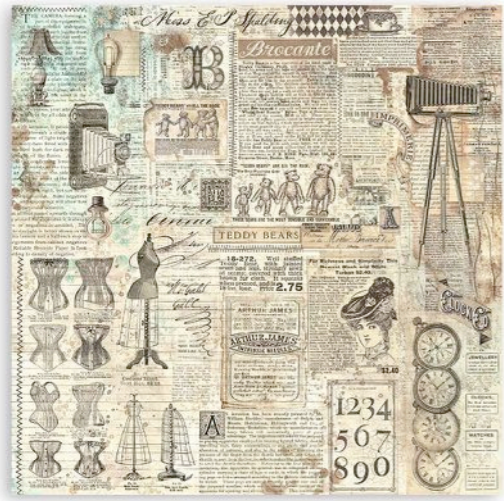
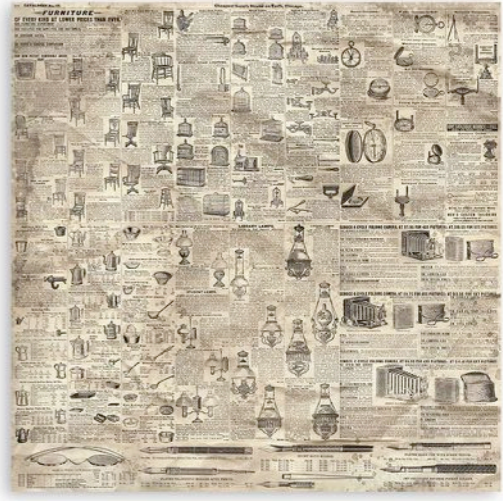
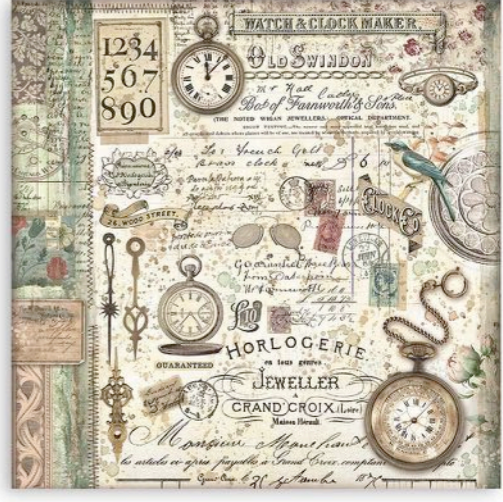
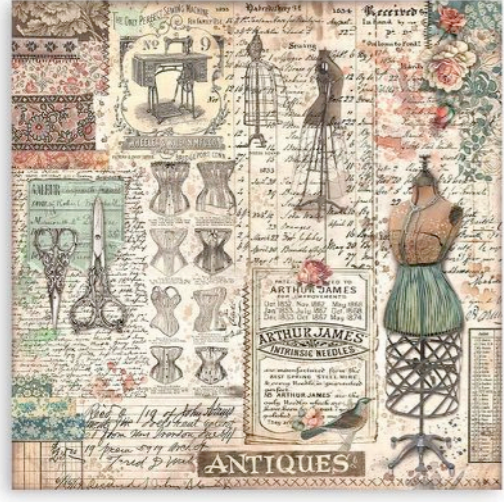
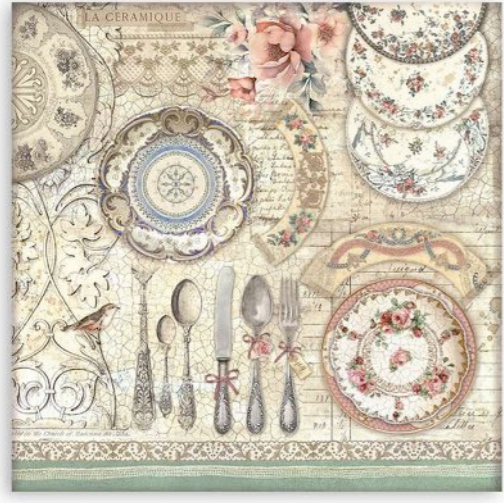


MAXI
cm
30.5 x 30.5
inches
12x12

SMALL
cm
20.3 x 20.3
inches
8x8

22
SHEETS
single
FACE

ACID
free
sustainable
FOREST





BACKGROUND selection

SBBL151 BLOCK 10 SHEETS DOUBLE FACE
CM 30.5 X 30.5 - 12"X12" - GR 190

SBBS102 BLOCK 10 SHEETS DOUBLE FACE
CM 20.3 X 20.3 - 8"X 8" - GR 190



LARGE
cm
30 x 30
inches
12 x 12

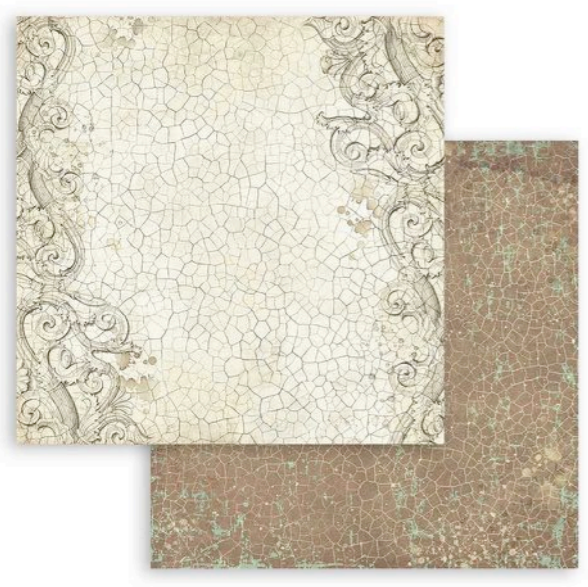
SMALL
cm
20.3 x 20.3
inches
8 x 8

10
SHEETS
double
FACE

ACID
free
sustainable
FOREST



SCRAPBOOKING PAD
inner pages





SCRAPBOOKING LOOSE sheets

6 SHEETS DOUBLE FACE
CM 30.5 x 31.5 - 12" x 12.4" - GR 190

SBB983

SBB984

SBB985



SBB986

SBB987

SBB988



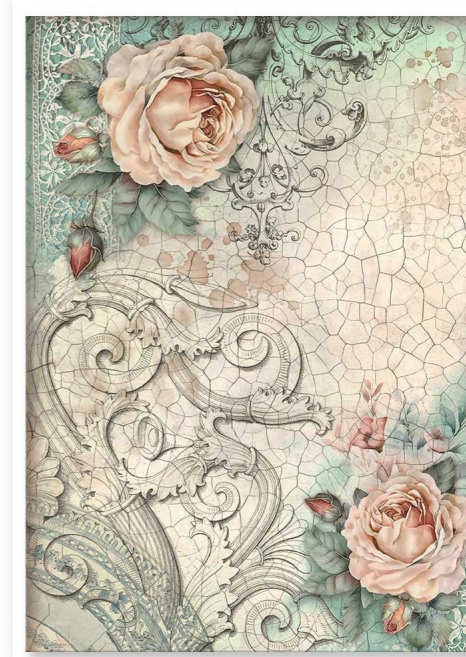
RICE PAPER loose

6 PRINTED RICE PAPER A4
CM 21 x 29.7 - 8.26" x 11.69" - GR 28

DFSA4851

DFSA4852

DFSA4853



DFSA4854

DFSA4855

DFSA4856

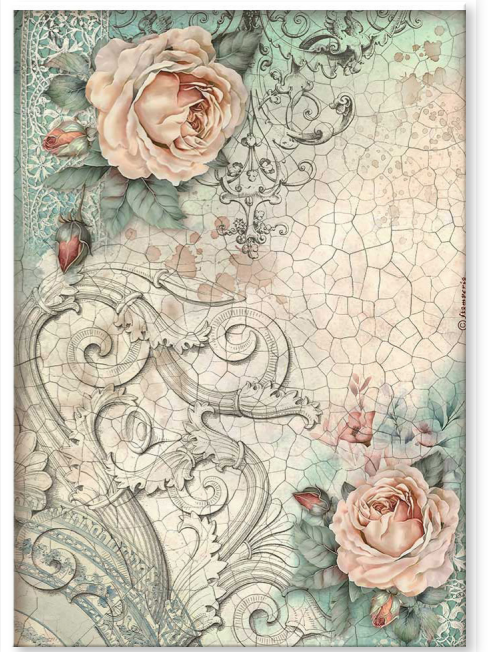


RICE PAPER selection

DFSA4XBR

6 PRINTED RICE PAPER A4
CM 21 x 29.7 - 8.26" x 11.69" - GR 28

Rice Paper Selection is a selection of 6 assorted subjects that you can use to create a background in your journal page or in your cards. You only need to add a subject, like an Ephemera or a Die Cut, and your creation will be ready.



DC33M RICE PAPER GLUE 50ML



HOW TO USE

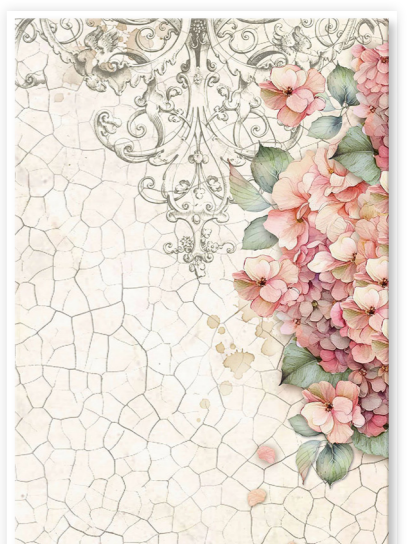
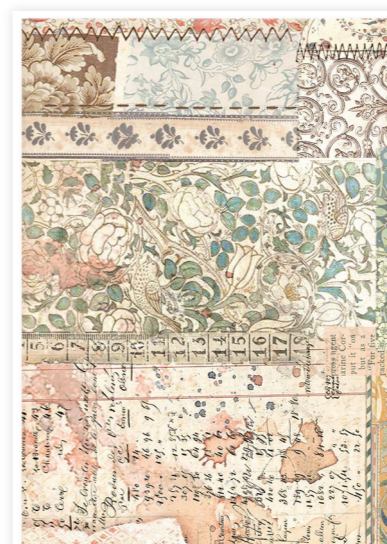
click and watch

RICE PAPER backgrounds

DFSAK6018

8 PRINTED RICE PAPER A6
CM 10.5 x 14.8 - 4.13" x 5.82" - GR 28

Rice Paper Backgrounds is a selection of subjects that you can use to create background in your journal page or in your cards. You only need to add a subject, like an Ephemera or a Die Cut, and your creation will be ready.



HOW TO USE

click and watch



WASHI pad

SBW05

PAD OF 8 ADHESIVE WASH SHEETS
CM 14.8 x 21 - 5.8" x 8.3" - ACID FREE

The Washi Album is printed on 8 sheets of translucent washi paper, which is easy to cut. It works best on light surfaces. While it's not mandatory to meticulously cut it, you can achieve precision by using the Stamperia cutter with a ceramic tip.



 **HOW TO USE**
click and watch

CERAMIC CUTTER pen

KRT17

IDEAL FOR INTRICATE SHAPES

For washi sheets, scrapbooking paper, cardboard, rub on, patchwork, stencils and many other craft materials. It stays sharp and never rusts. One press of the cutter head can be hidden, more safely. Ceramic cutter is finger friendly.



ONE PRESS OF THE CUTTER HEAD TO HIDE AND SHOW UP

PRECISION CUTS



RUB ON

TRANSFER FILM FOR DECORATION
CM 21.16 x 21.6 - 8.33" x 2.36"

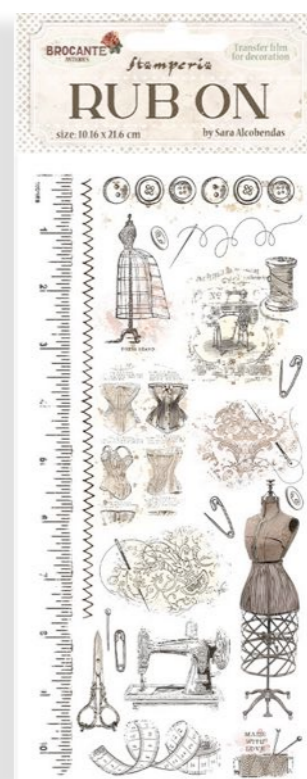
With Rub On you can transfer images on any kind of smooth surface, as they were printed on it. Very suitable for journaling and decorations. Best on light colour surfaces.



DFLRB76



DFLRB77



DFLRB78



DFLRB79



EPHEMERA

DFLCT42

ADHESIVE PAPER CUT OUTS
CM 12 x 16.5 - 4.72" x 6.49" - GR 300

33 PCS

Suitable for Journaling, Card Making and Scrapbooking

HOW TO PEEL OFF

click and watch



DIE CUTS *laser cut*

DFLDC94

PRINTED ON CARDBOARD - GR 800

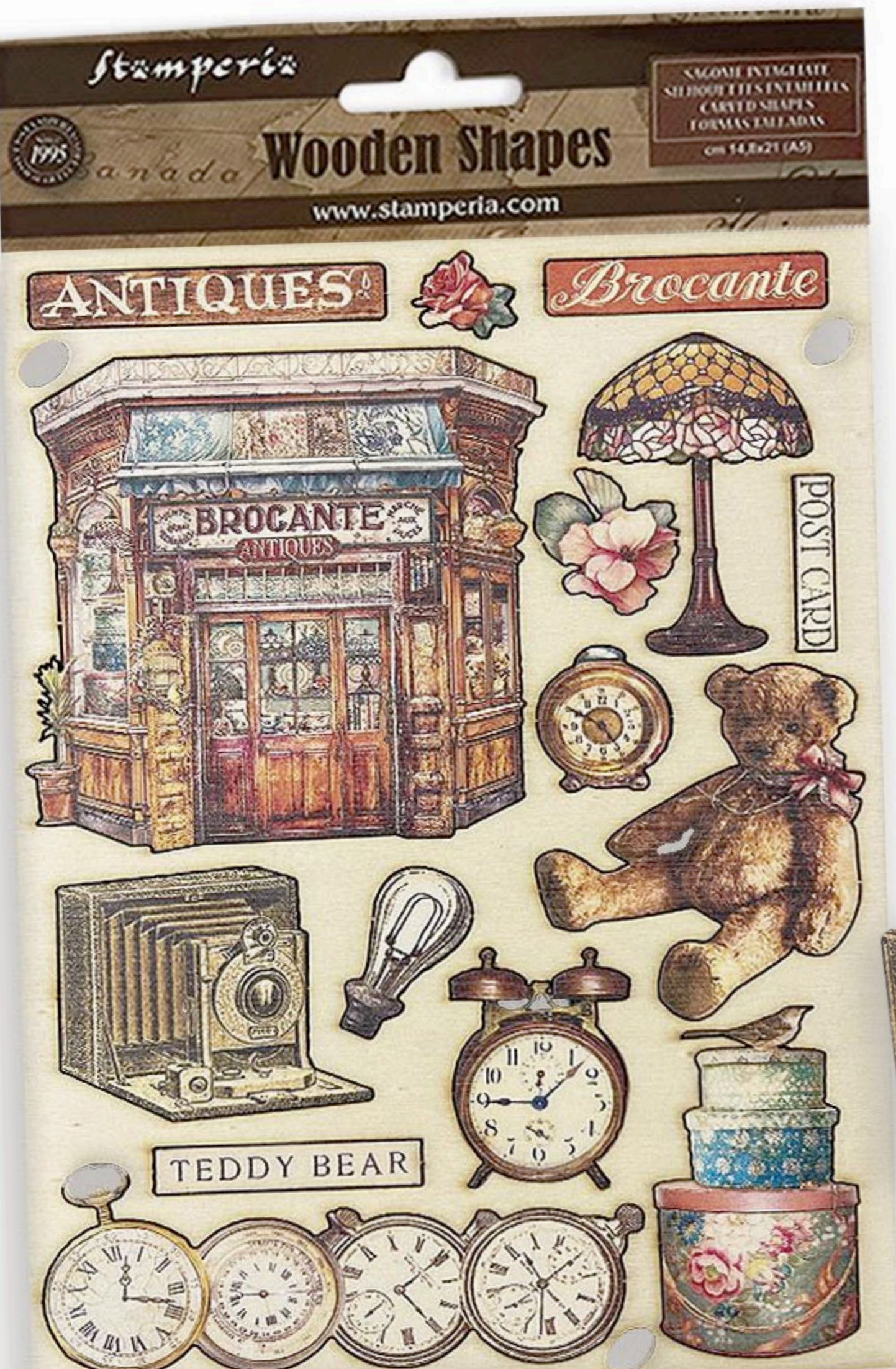
35 PCS



WOODEN SHAPE *laser cut*

CM 14.8 x 21 - 5.83" x 8.27"

KLSP156





DECORATIVE chips

CM 14 x 14 - 5.51" x 5.51"

Very thin and detailed laser cut embellishments for scrapbooking and card making.

SCB208



SCB209



SCB210



▶ HOW TO USE ← click and watch



SILICON moulds

CM 14.8 x 21 - 5.83" x 8.27"
THICKNESS MM 7 - 0.27"

KACMA507



KACMA514



KACMA515



KACMA517



STENCILS



HOW TO USE

click and watch

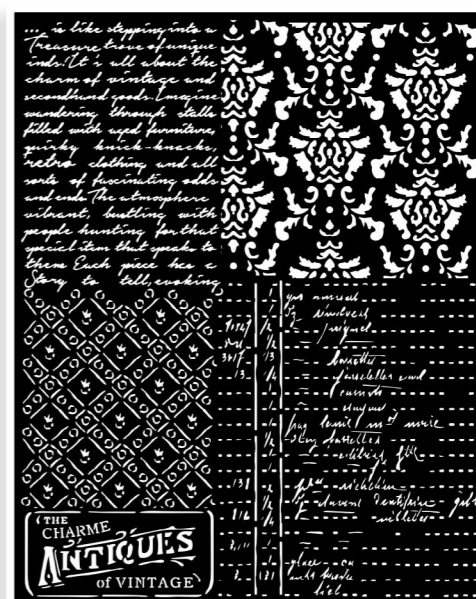
CM 20 x 25 - 7.87" x 9.84"
THICKNESS MM 0.25

Thick stencil made of resistant, transparent and flexible material. It is advisable to wash them every time after use before the color gets dry

KSTD159



KSTD160



KSTD161



FABRIC



SBPLT24

CM 30 x 30 - 11.81" x 11.81"

The Fabric can be sewn by hand or by machine. Can also be glued with Craft Glue - DC 31 - and washed by hand in cold water.



smooth effect



HOW TO USE

click and watch

DC31 CRAFT GLUE 80ML

PROJECTS BY *Sara Alcobendas*

TIME

SBBL150	SCRAPBOOKING PAD LARGE
SBBS102	SCRAPBOOKING PAD SMALL
DFSA4855	RICE PAPER A4
DC33G	RICE PAPER GLUE
K3P56	CRACKLÉ PASTE SILVER
K3P67	VOLUME PASTE
KAOLBR	VINTAGE ANTIQUING PASTE
K3P15R	CERANTICA METALLIC COPPER
DFLDC94	DIE CUT
KACMA514	SILICON MOULD
KACMA507	SILICON MOULD
KACMA517	SILICON MOULD
KSTD161	STENCIL
KAL12	ALLEGRO IVORY
KAL106	ALLEGRO EARTH
KAL39	ALLEGRO GARDEN GREEN
KAL53	ALLEGRO NOUGAT
KAL128	ALLEGRO APPLE
KAQ008	AQUACOLOR SPAY ANTIQUE PINK
KAQ004	AQUACOLOR SPRAY LEATHER



CARTONNAGE

SBBL150	SCRAPBOOKING PAD LARGE
KAOLBR	ANTIQUING VINTAGRE PASTE
KACMA515	SILICON MOULD
KAL12	ALLEGRO IVORY



ART ANTIQUES



DFSA4852	RICE PAPER A5
DFLDC94	DIE CUT
DC33G	RICE PAPER GLUE
KAL12	ALLEGRO IVORY
KAL57	ALLEGRO ANCIENT PINK
KAQ004	AQUACOLOR SPRAY LEATHER
K3P15G	CERANTICA METALLIC GOLD
SBPLT24	FABRIC
KACMA514	SILICON MOULD
KACMA515	SILICON MOULD
K3P55	CRAKLÉ PASTE GOLD
DC31M	CRAFT GLUE



BIG PALET



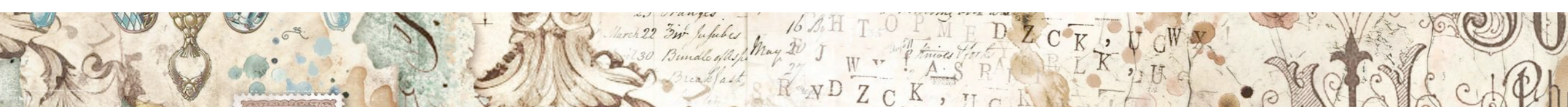
SBBL150	SCRAPBOOKING PAD SMALL
KSTD161	STENCIL
K3P61F	GLAMOUR PASTE ANCIENT PINK
KAL57	ALLEGRO ANCIENT PINK
KAL12	ALLEGRO IVORY
KAL44	ALLEGRO POWDER BLUSH
KAL110	ALLEGRO MILK WHITE
KAQ004	AQUACOLOR SPRAY LEATHER
KAQ008	AQUACOLOR ANTIQUE PINK
KAQ015	AQUACOLOR AQUAMARINE
K3P67	VOLUME PASTE
KACMA517	SILICON MOULD
KACMA515	SILICON MOULD
KACMA507	SILICON MOULD
SCB210	DECORATIVE CHIPS
KAOLBR	VINTAGE ANTIQUING PASTE



POST CARD



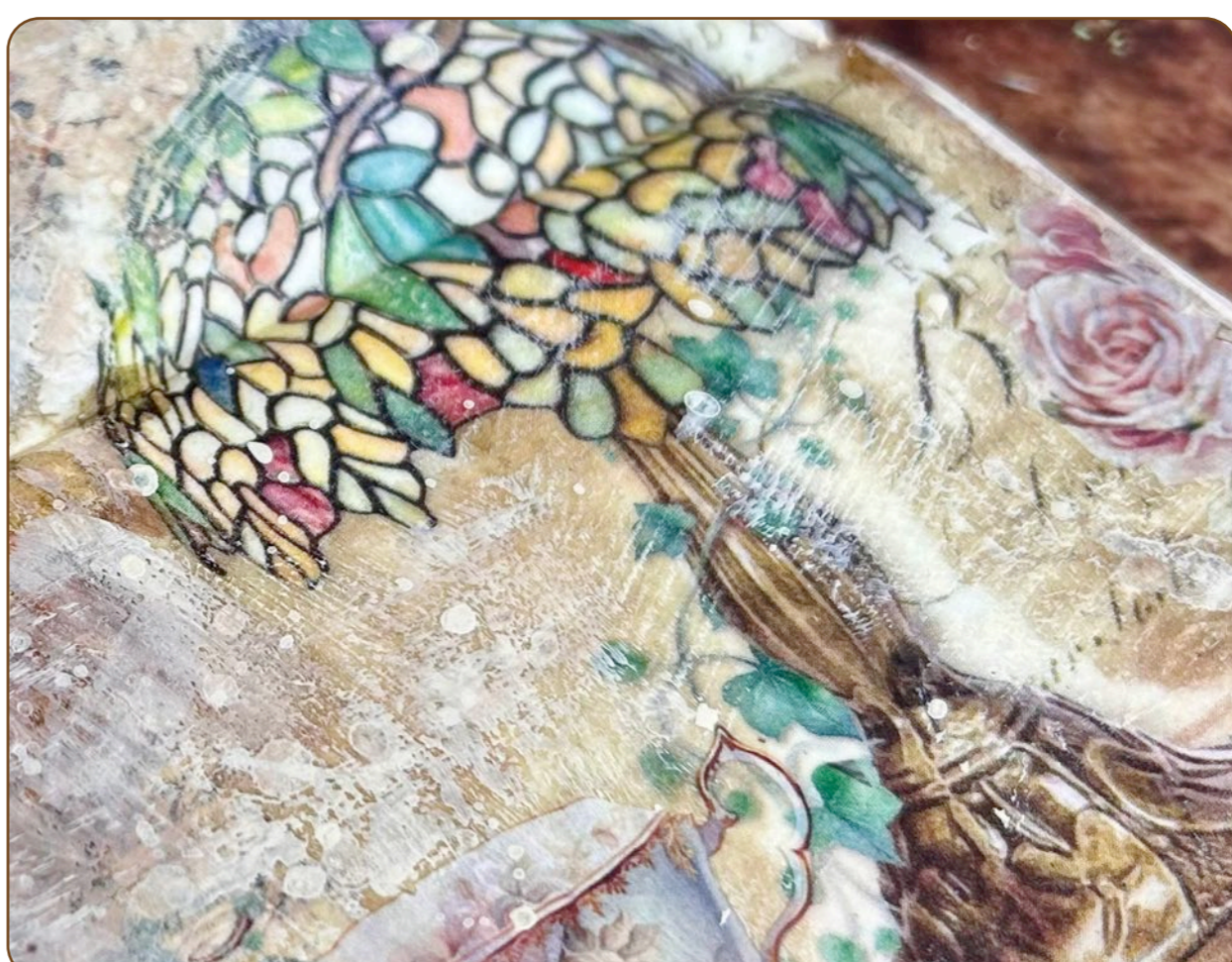
- SBBS102 SCRAPBOOKING PAD SMALL
- KSTD160 STENCIL
- KLSP156 WOODEN SHAPE
- DC31M CRAFT GLUE
- KAL12 ALLEGRO IVORY
- WKPR02 DYE INK PAD COFFEE
- K3P61F GLAMOUR PASTE ANCIENT PINK



JOURNAL



- SBBS100 SCRAPBOOKING PAD SMALL
- DFSA4XBR RICE PAPER SELECTION
- DFLRB79 RUB ON
- KAL12 ALLEGRO IVORY
- KAL11 ALLEGRO WHITE
- KAL51 ALLEGRO GOLD SAND
- KAL21 ALLEGRO CHOCOLATE
- KSTD160 STENCIL
- K3P70A HALO PASTE GOLD
- KAQ004 AQUACOLOR LEATHER
- DC31M CRAFT GLUE
- DC33G RICE PAPER GLUE





RECIPES NOTEBOOK

- | | |
|----------|------------------------|
| SBBXLB14 | SCRAPBOOKING PAD |
| DFLDC94 | DIE CUT |
| KACMA515 | SILICON MOULD |
| KAQ004 | AQUACOLOR SPAY LEATHER |
| KAL12 | ALLEGRO IVORY |
| KAL57 | ALLEGRO ANCIENT PINK |
| WKPR02 | DYE INK PAD COFFEE |
| DC31M | CRAFT GLUE |



phia and State of Pennsylvania
has this day produced to me proof, in the manner directed in the Act, entitled "An Act for the
and protection of American Seamen." And pursuant to the said Act, I do hereby certifi

Fiducie à la mie de pain, mélangez dans un saladier, 170 grammes de sucre en poudre, 4 jaunes d'œufs, 170 grammes de mie de pain, 1/4 de beurre fondu. Travaillez un moment puis ajoutez trois bonnes cuillerées de lait, un peu de fruits confits coupés en très petits morceaux, 1/4 de raisins de Corinthe un verre à bordeaux

grime, il est bon de dire que c'est un produit infailible et absolument inoffensif pour s'en débarrasser. C'est la Pâte épilatoire Duss. Aucune crainte à avoir en employant ce produit parfait. Tout en agissant rapidement puisqu'il lui suffit de quelques minutes pour supprimer tous duvets, rien dans sa composition ne peut



TEDDY BEAR TAG

- | | |
|----------|-------------------------|
| KLSP156 | WOODEN SHAPE |
| WKPR02 | DYE INK PAD COFFEE |
| KACMA514 | SILICON MOULD |
| KSTD160 | STENCIL |
| KAQ015 | AQUACOLOR AQUAMARINE |
| KAQ004 | AQUACOLOR LEATHER |
| K3P67 | VOLUME PASTE |
| KAOLBR | VINTAGE ANTIQUING PASTE |
| KAL12 | ALLEGRO IVORY |
| KAL53 | ALLEGRO NOUGAT |
| KAL50 | ALLEGRO OLD IVOY |
| K3P08N | GESSO PASTE |



ALLEGRO KIT

CAN ALLEGRO ACRYLICS ARE HIGHLY COVERING, MATT AND VERY SOFT. IDEAL FOR ANY SURFACES.



KAL18 RASPBERRY
KAL44 POWDER BLUSH
KAL50 OLD IVORY
KAL53 NOUGAT
KAL40 EARTH BROWN
KAL87 PETROLEUM GREEN

KALKIT46
ML60

CRACKLÉ PASTE

SUITABLE FOR EVERY POROUS SURFACE. REQUIRED PRIMER ON SMOOTH SURFACES. ONCE IT IS DRIED IT BECOMES TRANSPARENT. YOU CAN COLOR IT WITH ACRYLIC COLORS, ACQUACOLOR AND MYSTIK INK. CAN BE DRIED WITH THE HAIR DRYER.



K3P50
ML150

SOFT CLAY

EXTRA LIGHT, SOFT, WHITE COLOUR MODELING CLAY. IT CAN BE ENGRAVED, IMPRESSED BY STAMPS AND WORKED TO CREATE 3D DECORATIONS. AIR-DRY. DRYING TIME: 24H ACCORDING TO THICKNESS.



K3P44
GR160

K3P58
GR80

VOLUME PASTE

MODELLING PASTE: SOFT, EASY TO MODEL, EXTRA VOLUME, MATT.



K3P67
ML150

AQUACOLOR KIT

FOR ALL SURFACES, INCLUDING PLASTIC AND TEXTILE. VERY RESISTANT, BRILLIANT, TRANSPARENT. SUITABLE FOR BACKGROUNDS AND FOR VINTAGE EFFECTS.



KAQ008 ANTIQUE PINK
KAQ015 AQUAMARINE
KAQ004 LEATHER

KAQXBR
ML60

CRACKLÉ PASTE WHITE

SUITABLE FOR EVERY POROUS SURFACE. REQUIRED PRIMER ON SMOOTH SURFACES. YOU CAN COLOR IT WITH ACRYLIC COLORS, ACQUACOLOR AND MYSTIK INK. CAN BE DRIED WITH THE HAIR DRYER.



K3P37
ML150

VINTAGE ANTIQUING PASTE

CAN BE USED ON ANY SURFACE. ONLY AFTER SEALING THE FINISHED WORK WITH A LAYER OF MIXED MEDIA GLUE YOU CAN PROCEED WITH ANTIQUING. SPREAD A GENEROUS LAYER OF THE PASTE AND THEN SWIPE IT OFF WITH A WET TISSUE. LET IT DRY.



KAOLBR
ML170

FINISH VARNISH MATT

TRANSPARENT PROTECTIVE VARNISH MATT.



KE05
ML80

CRACKLÉ PASTE SILVER

A SELECTION OF 3 SMALL JARS-CONTAINING THE MOST POPULAR STAMPERIA PRODUCTS : CRAKLÉ PASTE, VOLUME PASTE AND GLOSSY GEL. ALL YOU NEED FOR YOUR MIXED MEDIA PROJECTS.



K3P56
ML150

CRACKLÉ PASTE GOLD

GLOSSY GEL HEAVY BODY PASTE IS SHINY AND TRANSPARENT, EXTRA PLUMPING UP. IDEAL FOR RELIEF DECORATIONS.



K3P55
ML150

CERANTICA

EXTRA FINE METALLIC POWDER TRADITIONALLY USED BY GILDERS, IT NEEDS A MEDIUM TO BE FIXED ON THE SURFACE. IT CAN BE MIXED WITH ALCOHOL INK TO OBTAIN A GOLD LIQUID PAINT.



K3P15B
METALLIC BRONZE
ML20

K3P15G
METALLIC GOLD
ML20

K3P15P
ANCIENT PINK
ML20

CRACKLÉ COUNTRY

SPREAD THE CRACKLÉ COUNTRY ON THE SURFACE. WHEN DRY, PAINT IT WITH ACRYLICS COLOURS. THE CRACKLÉ EFFECT WILL COME UP SOON. WASH THE BRUSHES WITH WATER AND SOAP.



KE07M
ML80

GLAMOUR PASTE

IS SOFT IN COLOURS AND TEXTURE BECAUSE IT CONTAINS MICRO GRAINS POWDER. IT IS MATT AND SHINY AT THE SAME TIME BECAUSE IT CONTAINS MICA CRYSTALS. IT IS BEAUTIFUL FOR STENCILS AND PAINTING. IT CAN ALSO BE USED WITH TEXTURE IMPRESSION MOULDS TO OBTAIN SHINY 3D FILM.



K3P6 1A

SPARKLING WHITE
ML100

K3P6 1B

GOLD
ML100

K3P6 1E

SILVER
ML100

K3P6 1F

ANCIENT PINK
ML100

TROWEL SPATULA

METAL SPATULA THAT YOU CAN USE TO SPREAD THE PASTES



K3T13/S

VINTAGE PATINA

VINTAGE PATINA CAN BE USED ON ANY SURFACE. FOR AGED EFFECT AND ANTIQUE FINISH. EASY TO APPLY IT FORMS A PROTECTIVE COATING ON THE SURFACE. WATER BASED, PROTECT FROM FROST! REPLACE CAP TIGHTLY.



KAOLVP01

WHITE - ML50

KAOLVP02

TURQUOISE - ML50

KAOLVP03

RUST - ML50

KAOLVP04

GREY - ML50

WOODEN EFFECT SPATULA

SPECIAL SPATULA TO OBTAIN A WOOD EFFECT, USING ACRYLIC PAINTS, ALLEGRO OR VIVACE.



KRP01

CM10

FLAT POINT BRUSH

BRUSH SIZE 18



KR32/S

STANDARINO

SIZE 4

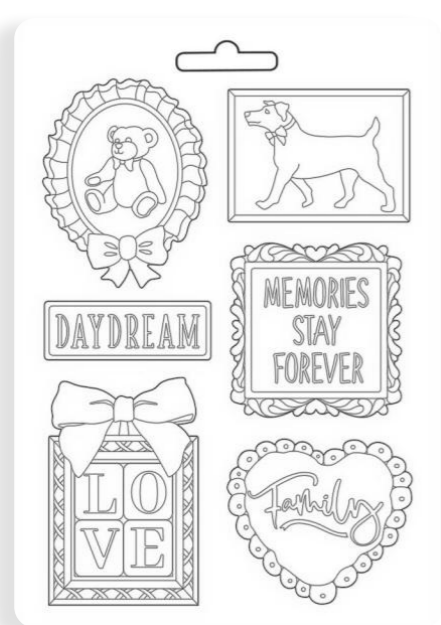


KR86/S

CM 3x18.5

Complete your collection

MAXI & MINI MOULD



K3PTA4530



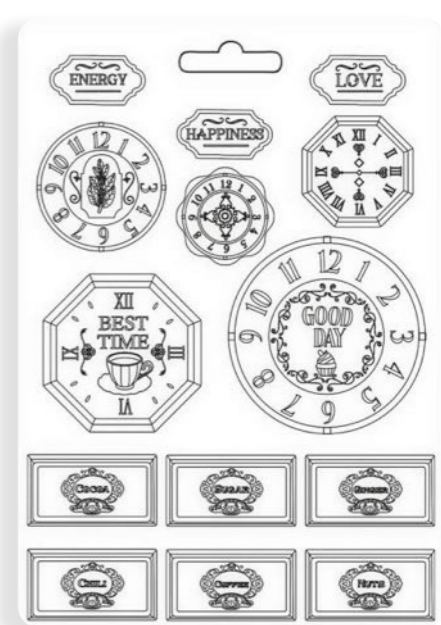
K3PTA4531



K3PTA4536



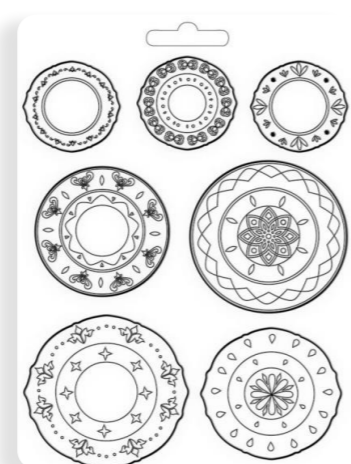
K3PTA4542



K3PTA4570



K3PTA588



K3PTA5605



K3PTA5612



K3PTA5636



K3PTA5639

SILICON MOULD



KACM15



KACMA504

STAMP



WTK173



WTKCC109

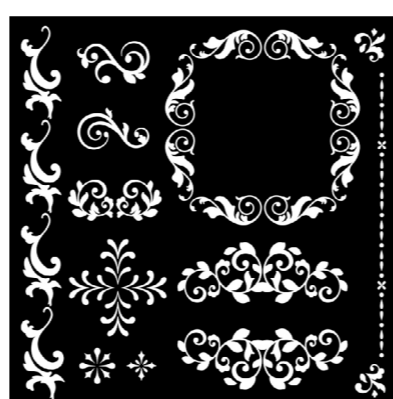
STENCIL



KSTDQ77
CM 18x18

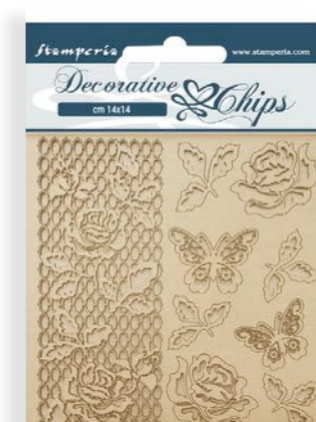


KSTDQ84
CM 18x18



KSTDQ97
CM 18x18

DECORATIVE CHIPS



SCB16



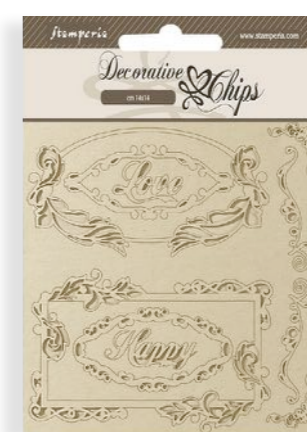
SCB159



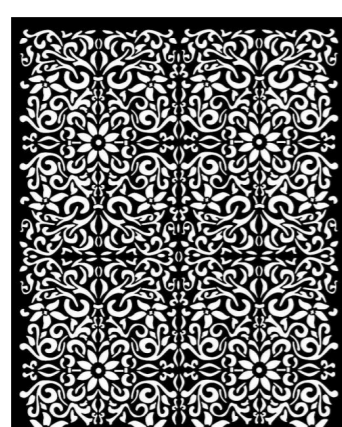
KSTD088
CM 20x25



KSTD092
CM 20x25



SCB197



KSTD133
CM 20x25



KSTD135
CM 20x25