



ts

cr

Stamperia  

Sir **VAGABOND**
IN FANTASY WORLD

Scrapbooking by Antonis Tzanidakis



www.stamperia.com

Stamperia



Antonis Tzanidakis



Sir Vagabond returns, possibly in an alternative reality. Mechanical gears intertwine with nature, even within flowers. Relics of a bygone civilization, including gargoyles and baroque ornaments, resurface. Sir Vagabond delves into the mystery of his whereabouts, pondering if a mirror was his portal. Antonis Tzanidakis encourages you to weave your own narrative and enjoy crafting your mixed media and journals.



STAMPERS

link

VIDEO

collection

HAVE A COMPLETE LOOK
ALL THE COLLECTION'S ITEMS



LIVE

streaming

BE THE FIRST TO
DISCOVER ALL THE ITEMS



BUSINESS

link

B2B

link

VISIT OUR BUSINESS TO
BUSINESS, REGISTER AND BUY



DOWNLOAD

materials

CATALOGS, GRAPHICS, VIDEOS
TO PROMOTE YOUR BUSSINESS



FANTASY WORLD



CRAFTED CRAFTED CHRONICLES STEP BY STEP TUTORIAL

BY *Antonis Tzanidakis*





SCRAPBOOKING *pad*

SBBL148 BLOCK 10 SHEETS DOUBLE FACE
CM 30.5 x 30.5 - 12"x12" - GR 190

SBBS98 BLOCK 10 SHEETS DOUBLE FACE
CM 20.3 x 20.3 - 8"x 8" - GR 190



SBBL148



SBBS98



LARGE
cm
30 x 30
inches
12 x 12

SMALL
cm
20.3 x 20.3
inches
8 x 8

10
SHEETS
double
FACE

ACID
free
sustainable
FOREST



SCRAPBOOKING PAD
inner pages

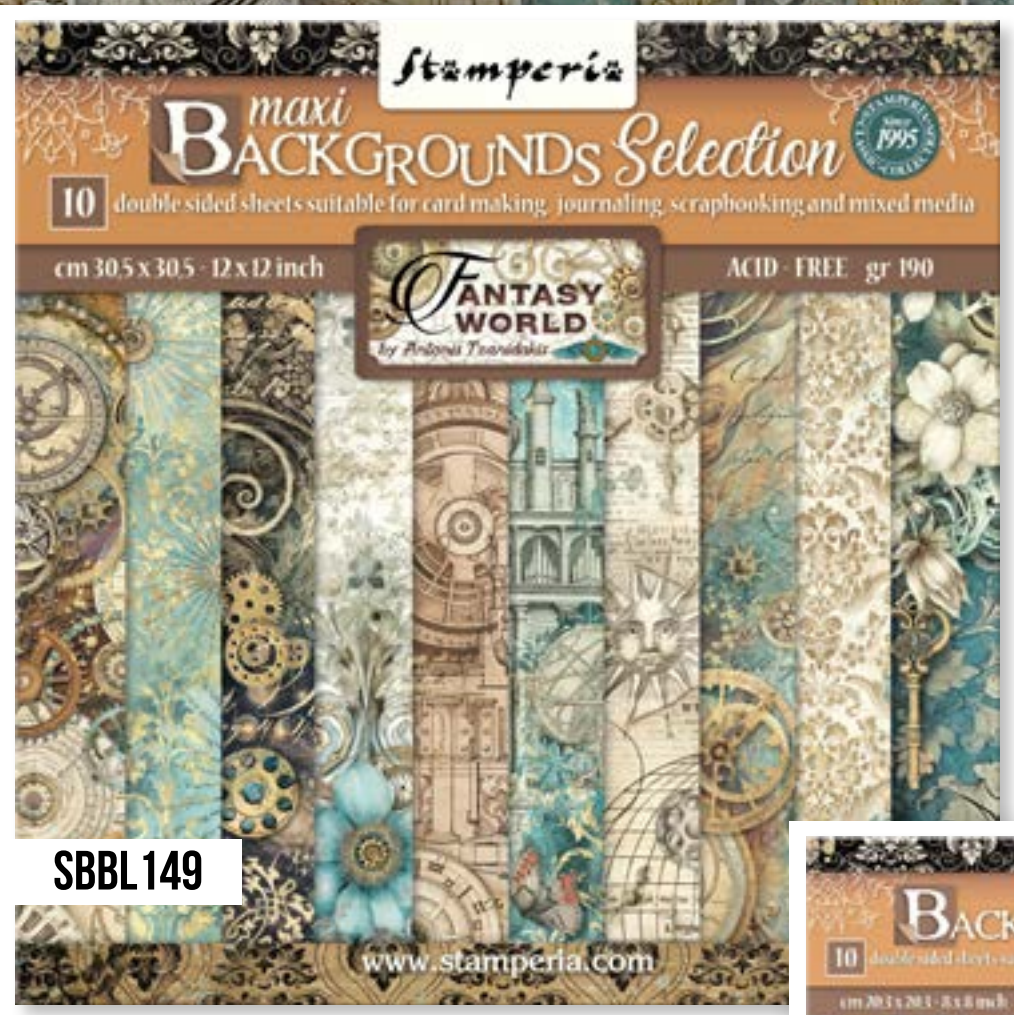




BACKGROUND selection

SBBL149 BLOCK 10 SHEETS DOUBLE FACE
CM 30.5 x 30.5 - 12"x12" - GR 190

SBBS99 BLOCK 10 SHEETS DOUBLE FACE
CM 20.3 x 20.3 - 8"x 8" - GR 190



SBBL149



SBBS99



LARGE
cm
30 x 30
inches
12x12

SMALL
cm
20.3 x 20.3
inches
8x8

10
SHEETS
double
FACE

ACID
free
sustainable
FOREST



SCRAPBOOKING PAD
inner pages





SCRAPBOOKING LOOSE *sheets*

6 SHEETS DOUBLE FACE
CM 30.5 x 31.5 - 12" x 12.4" - GR 190

SBB977



SBB978



SBB979



SBB980



SBB981



SBB982



RICE PAPER *loose*

6 PRINTED RICE PAPER A4
CM 21 x 29.7 - 8.26" x 11.69" - GR 28



DFSA4841



DFSA4842



DFSA4843



DFSA4844



DFSA4845



DFSA4846



WASHI *pad*

SBW03

PAD OF 8 ADHESIVE WASH SHEETS
CM 14.8 X 21 - 5.8" X 8.3" - ACID FREE

The Washi Album is printed on 8 sheets of translucent washi paper, which is easy to cut. It works best on light surfaces. While it's not mandatory to meticulously cut it, you can achieve precision by using the Stamperia cutter with a ceramic tip.



 **HOW TO USE**
click and watch



CERAMIC CUTTER *pen*

KRT17

IDEAL FOR INTRICATE SHAPES

For washi sheets, scrapbooking paper, cardboard, rub on, patchwork, stencils and many other craft materials. It stays sharp and never rusts. One press of the cutter head can be hidden, more safely. Ceramic cutter is finger friendly.



ONE PRESS OF THE CUTTER HEAD TO HIDE AND SHOW UP



PRECISION CUTS



RICE PAPER *selection*

DFSA4XSV

6 PRINTED RICE PAPER A4
CM 21 x 29.7 - 8.26" x 11.69" - GR 28

Rice Paper Selection is a selection of 6 assorted subjects that you can use to create a background in your journal page or in your cards. You only need to add a subject, like an Ephemera or a Die Cut, and your creation will be ready.



DC33M RICE PAPER GLUE 50ML



HOW TO USE

click and watch

RICE PAPER *backgrounds*

DFSAK6016

8 PRINTED RICE PAPER A6
CM 10.5 x 14.8 - 4.13" x 5.82" - GR 28

Rice Paper Backgrounds is a selection of subjects that you can use to create background in your journal page or in your cards. You only need to add a subject, like an Ephemera or a Die Cut, and your creation will be ready.



HOW TO USE

click and watch



RUB ON

TRANSFER FILM FOR DECORATION
CM 21.16 x 21.6 - 8.33" x 2.36"

With Rub On you can transfer images on any kind of smooth surface, as they were printed on it. Very suitable for journaling and decorations. Best on light colour surfaces.

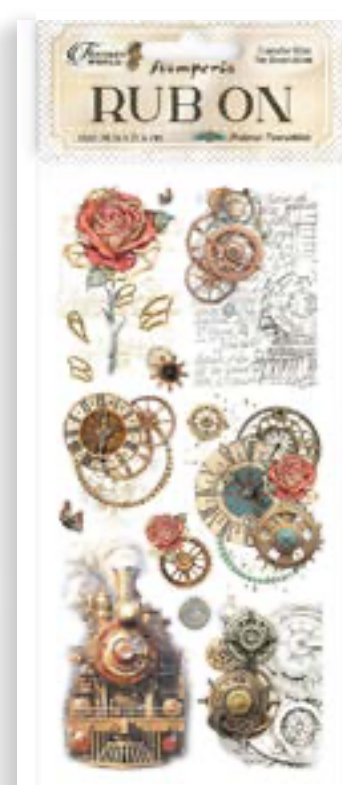
DFLRB70



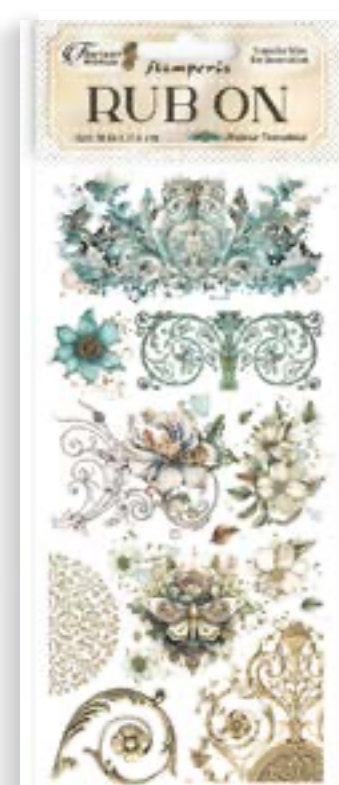
DFLRB71



DFLRB72



DFLRB73



EPHEMERA

DFLCT40

39 PCS

ADHESIVE PAPER CUT OUTS
CM 12 x 16.5 - 4.72" x 6.49" - GR 300

Suitable for Journaling, Card Making and Scrapbooking

HOW TO PEEL OFF

click and watch

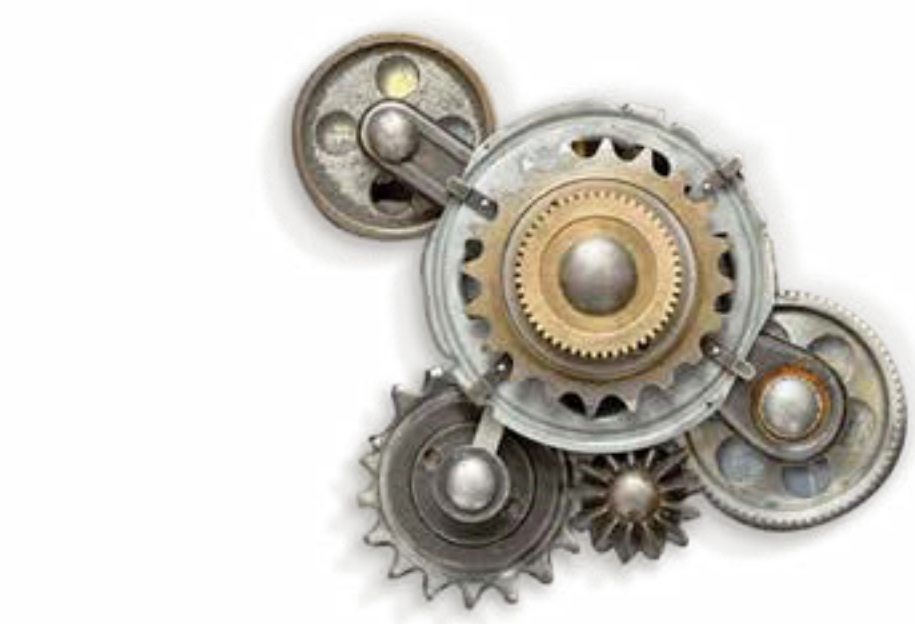


DIE CUTS *laser cut*

DFLDC92

PRINTED ON CARDBOARD - GR 800

45 PCS



WOODEN SHAPE *laser cut*

CM 14.8 x 21 - 5.83" x 8.27"

KLSP154



MOULDS

MAXI

CM 21 x 29.7 - 8.27" x 11.69"



[▶ HOW TO USE](#)
click and watch

K3PTA4573



K3PTA4574



K3PTA4575



[▶ HOW TO USE](#)
click and watch

SILICON moulds

CM 14.8 x 21 - 5.83" x 8.27"
THICKNESS MM 7 - 0.27"



KACMA508



KACMA518



KACMA519



KACMA520



DECORATIVE *chips*

CM 14 x 14 - 5.51" x 5.51"

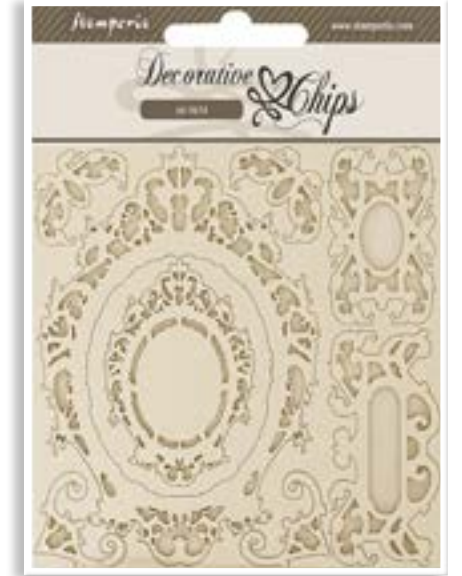
Very thin and detailed laser cut embellishments for scrapbooking and card making.



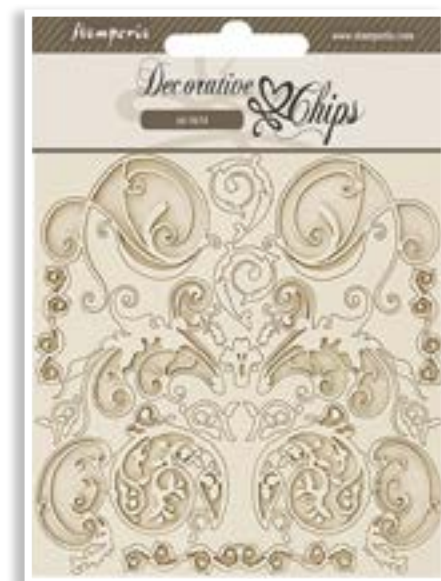
SCB205



SCB206



SCB207



STENCILS

HOW TO USE
 ← click and watch

CM 20 x 25 - 7.87" x 9.84"
 THICKNESS MM 0.25

Thick stencil made of resistant, transparent and flexible material. It is advisable to wash them every time after use before the color gets dry.



KSTD155



KSTD156



KSTD157



KSTD158





CLEAR stamps

CM 14 x 18 - 5.51" x 7.08"

Modular stamp with detachable shapes. Transparent and sticking acrylic gum to be stuck in Stamperia acrylic block. Long duration, and easy to clean

WTK189



WTK190



▶ HOW TO USE
← click and watch



FABRIC

SBPLT23 CM 30 x 30 - 11.81" x 11.81"

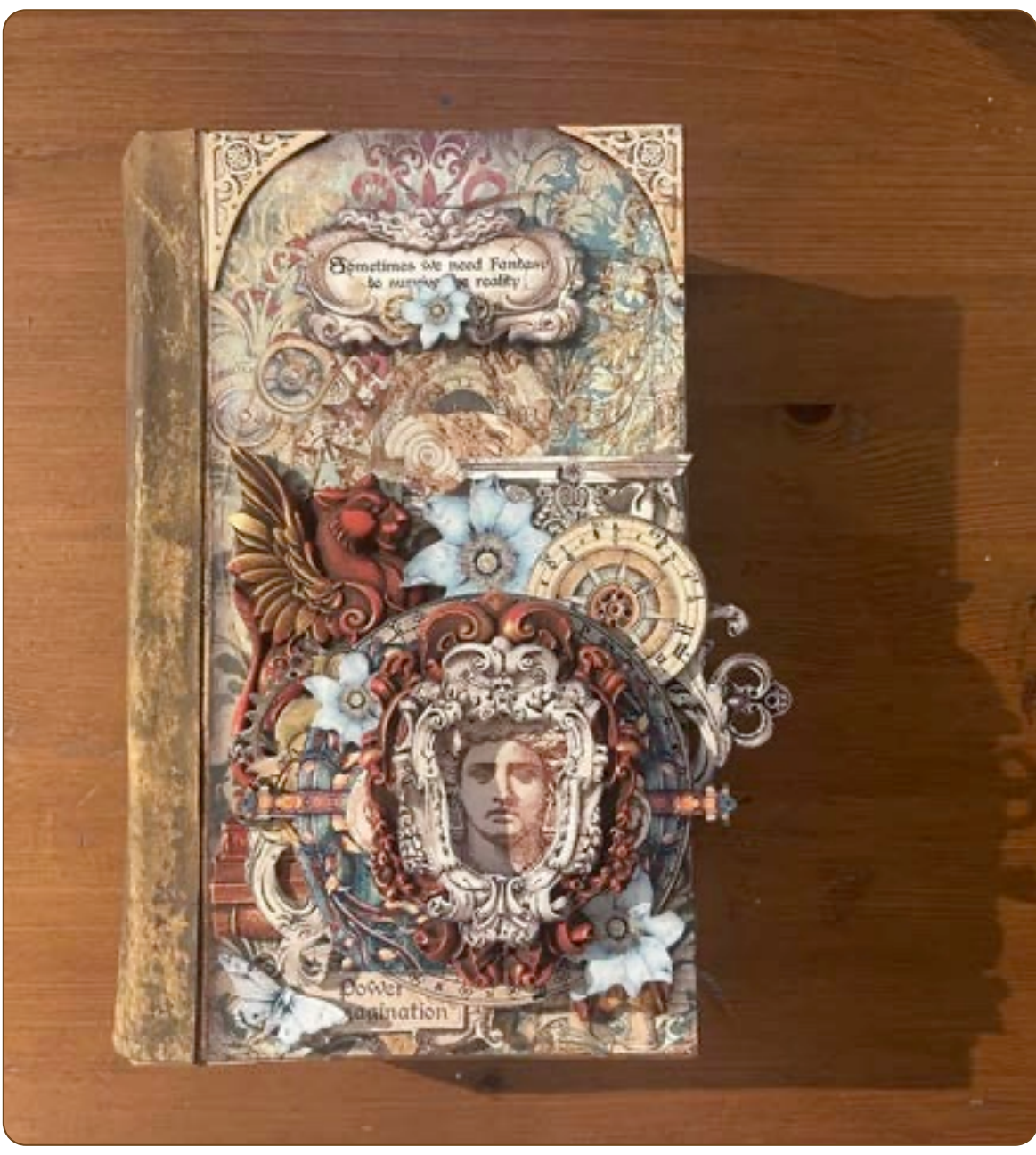
The Fabric can be sewn by hand or by machine. Can also be glued with Craft Glue - DC 31 - and washed by hand in cold water.



smooth effect

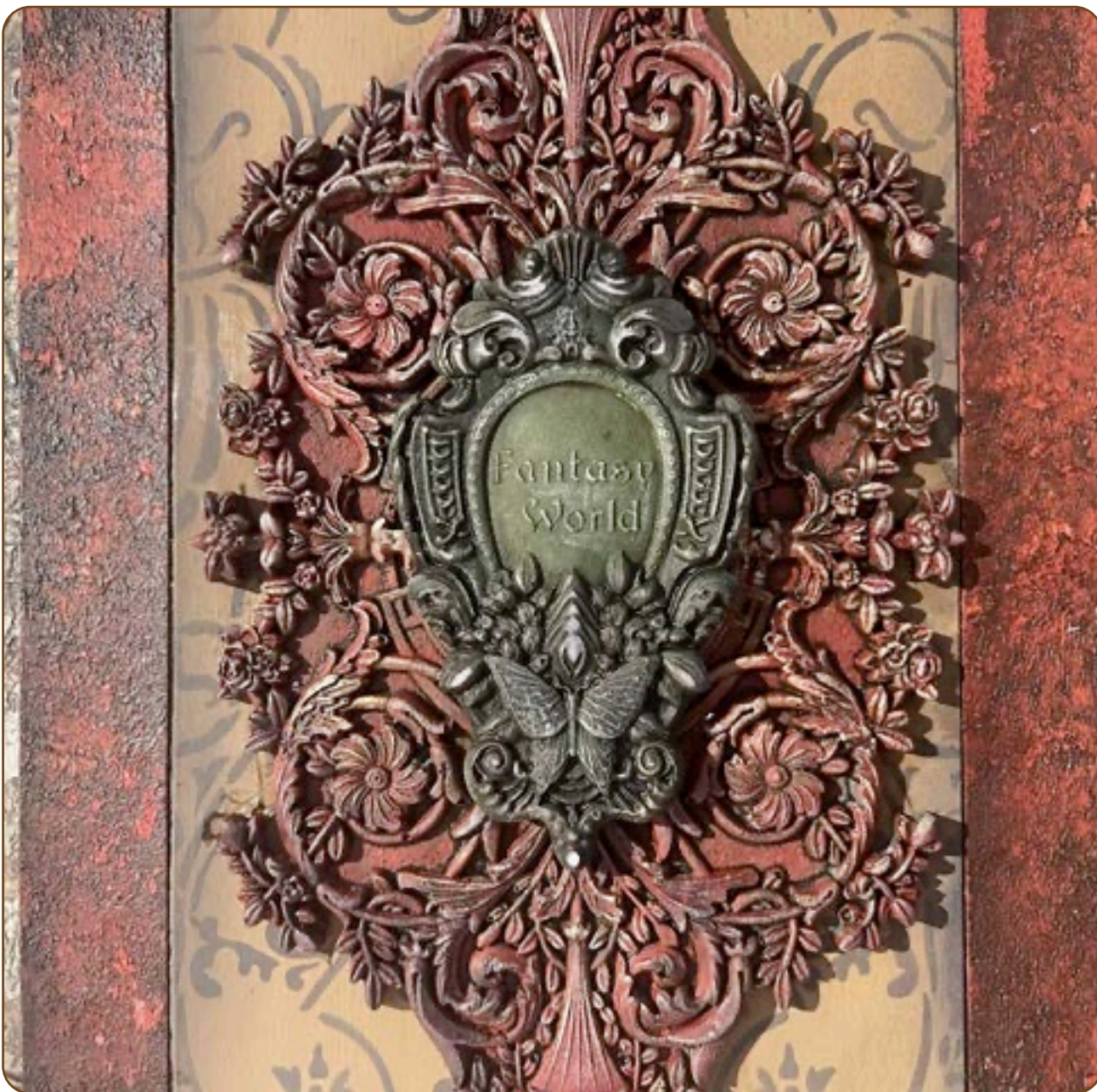
▶ HOW TO USE
← click and watch

DC31 CRAFT GLUE 80ML



THE POWER OF IMAGINATION

- | | |
|-----------|---------------------------|
| SBBL148 | SCRAPBOOKING PAD LARGE |
| DFLDC92 | DIE CUT |
| K3PTA4573 | MAXI MOULD A4 |
| K3PTA4574 | MAXI MOULD A4 |
| KACMA508 | SILICON MOULD A5 |
| KACMA519 | SILICON MOULD A5 |
| KSTD157 | STENCIL |
| KLSP154 | WOODEN SHAPE |
| WTK189 | CLEAR STAMP |
| DFPCA4 | STONE PAPER A4 |
| KAL38 | ALLEGRO CORAL RED |
| KAL109 | ALLEGRO INDIAN TURQUOISE |
| KAL95 | ALLEGRO AVOCADO |
| KAL36 | ALLEGRO CORN |
| KAQ004 | AQUACOLOR SPRAY LEATHER |
| DC28M | MIXED MEDIA GLUE |
| DC31 | CRAFT GLUE |
| K3P43 | GLOSSY GEL |
| K3P50 | CRACKLÉ PASTE TRANSPARENT |
| KAOLBR | VINTAGE PASTE |



FANTASY WORLD'S CASE

- | | |
|-----------|---------------------------|
| SBBL149 | BACKGROUND S SELECTION |
| DFSA4845 | RICE PAPER A4 |
| DFSA4846 | RICE PAPER A4 |
| K3PTA4573 | MOULD A4 |
| KACMA519 | SILION MOULD |
| KSTD | STENCIL |
| KSTDQ | STENCIL |
| KAOLBR | VINTAGE PASTE |
| DFPCA4 | STONE PAPER A4 |
| K3P50 | CRACKLÉ PASTE TRANSPARENT |
| DC31 | CRAFT GLUE |
| K3P43 | GLOSSY GEL |
| KE52M | FLUID GLOSS |
| K328P | PRIMER |
| K3P67 | VOLUME PASTE |
| DC28M | MIXED MEDIA GLUE |
| KAL38 | ALLEGRO CORAL RED |
| KAL36 | ALLEGRO CORN |
| KAL45 | ALLEGRO SHADOW |
| KAL95 | ALLEGRO SVOCADO |
| KAQ004 | AQUACOLOR SPRAY LEATHER |
| KRV01 | BLENDING TOOL |





LOVE ART JOURNAL PAGE

SBBL148 SCRAPBOOKING PAD LARGE
 SBW03 WASHI PAD ALBUM
 DFLRB73 RUB ON
 DFLCT40 EPHEMERA
 DFSAK6016 RICE PAPER BACKGROUNDS
 DC33M RICE PAPER GLUE
 JCH01A6 MIXED MEDIA ART JOURNAL
 WKPR01 DYE INK PAD BLACK SHADOW



NOT ALL THOSE WHO WONDER ARE LOST

SBBL148 SCRAPBOOKING PAD LARGE
 DFSAK6016 RICE PAPER BACKGROUNDS
 DFLRB73 RUB ON
 SBW03 WASHI PAD ALBUM
 DFLDC92 DIE CUT
 DC33M RICE PAPER GLUE
 JCH01A6 MIXED MEDIA ART JOURNAL
 WKPR01 DYE INK PAD BLACK SHADOW



POWER OF IMAGINATION

SBBS98 SCRAPBOOKING PAD SMALL
 DFLCT40 EPHEMERA
 DFLDC92 DIE CUT
 KC90A6 WHITE ORGANIZER A6
 DFSA4843 RICE PAPER A4
 SCB207 DECORATIVE CHIPS
 DC33G RICE PAPER GLUE
 WKPR01 DYE INK PAD BLACK SHADOW
 WTK189 CLEAR STAMP
 K3P68B BLACK & MATT SUPERBASE
 DC31 CRAFT GLUE
 KR11 BLENDING SPONGES



PROJECTS BY *Sara Alcobendas*

FANTASY

| | |
|-----------|-------------------------|
| SBBL149 | SCRAPBOOKING PAD LARGE |
| DFLDC92 | DIE CUT |
| DFSA4844 | RICE PAPER A4 |
| K3PTA4573 | MOULD A4 |
| WKPR02 | DYE INK PAD COFFEE |
| KAL12 | ALLEGRO IVORY |
| KAL103 | ALLEGRO MAHOGANY |
| K3P55 | CRACKLÉ PASTE GOLD |
| KSTD158 | STENCIL |
| DC31M | CRAFT GLUE |
| K3P15G | CERNATICA METALLIC GOLD |

PROJECTS BY *Alda Judite*

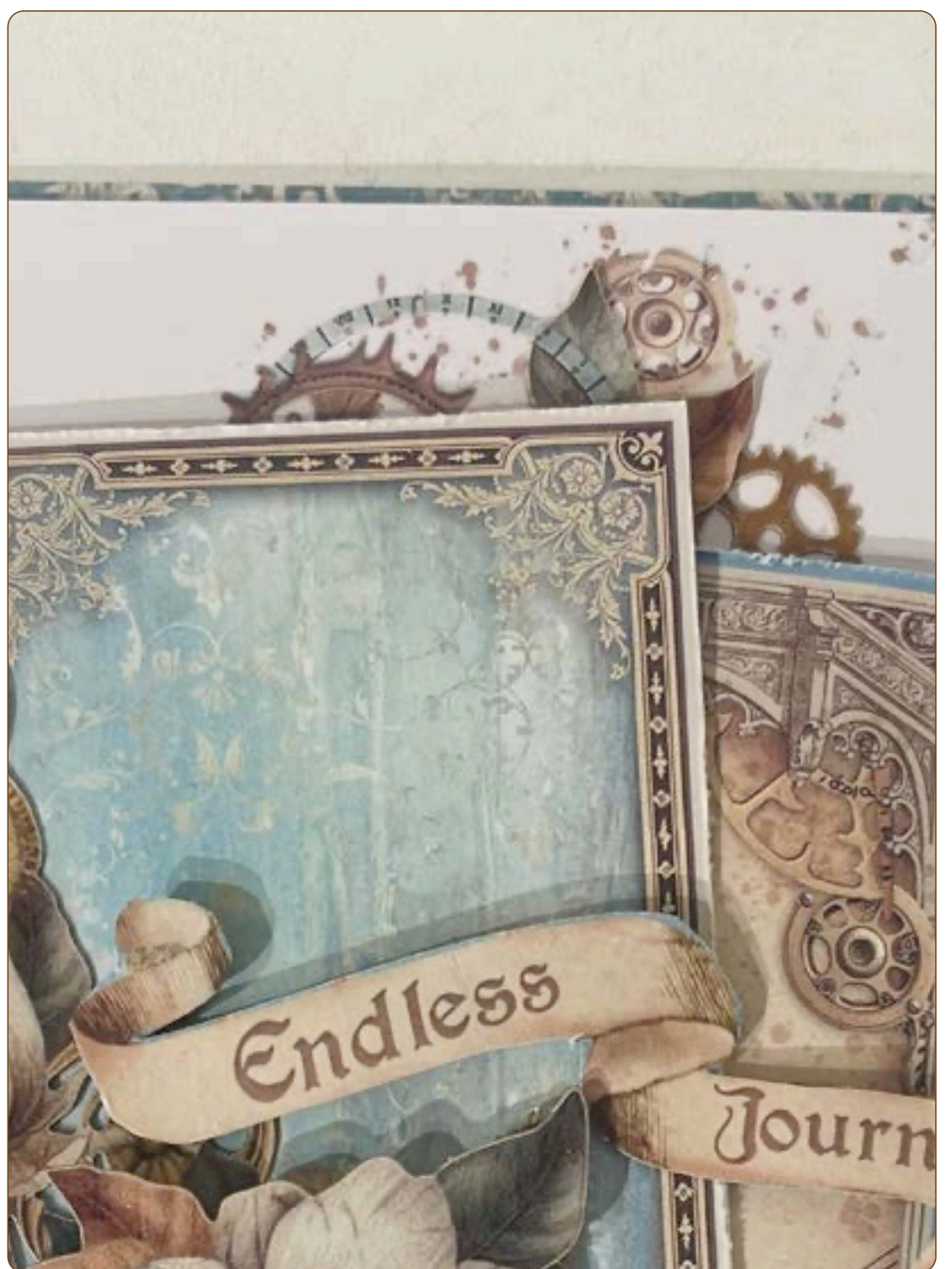
LEAF OF FANTASY

| | |
|----------|--------------------------|
| DFSA4842 | RICE PAPER A4 |
| DC33G | RICE PAPER GLUE |
| KSTD156 | STENCIL |
| SCB205 | DECORATIVE CHIPS |
| DFPCA4 | STONE PAPER A4 |
| DFLRB72 | RUB ON |
| KAQ004 | AQUACOLOR SPRAY LEATHER |
| KAL109 | ALLEGRO INDIAN TURQUOISE |
| KAL08 | ALLEGRO ORANGE |
| KAL36 | ALLEGRO CORN |
| KAL100 | ALLEGRO HUNTER GREEN |
| KAL12 | ALLEGRO IVORY |
| KAL21 | ALLEGRO CHOCOLATE |
| KE05 | FINISH VARNISH MATT |

PROJECTS BY *Vicky Papaioannou*

ENDLESS JOURNEY

| | |
|---------|------------------------|
| SBBL149 | SCRAPBOOKING PAD LARGE |
| SBBS98 | SCRAPBOOKING PAD SMALL |
| DFLCT40 | EPHEMERA |
| DFLRB72 | RUB ON |
| DC32M | CRAFT GLUE |



ALLEGRO KIT

CAN ALLEGRO ACRYLICS ARE HIGHLY COVERING, MATT AND VERY SOFT. IDEAL FOR ANY SURFACES.



KAL106 EARTH
KAL128 APPLE
KAL43 COOKIE
KAL51 GOLD SAND
KAL42 BLUE AVIATION
KAL95 AVOCADO

KALKIT45
ML60

CRACKLÉ PASTE

SUITABLE FOR EVERY POROUS SURFACE. REQUIRED PRIMER ON SMOOTH SURFACES. ONCE IT IS DRIED IT BECOMES TRANSPARENT. YOU CAN COLOR IT WITH ACRYLIC COLORS, ACQUACOLOR AND MYSTIK INK. CAN BE DRIED WITH THE HAIR DRYER.



K3P50
ML150

AQUACOLOR KIT

FOR ALL SURFACES, INCLUDING PLASTIC AND TEXTILE. VERY RESISTANT, BRILLIANT, TRANSPARENT. SUITABLE FOR BACKGROUNDS AND FOR VINTAGE EFFECTS.



KAQ004 LEATHER
KAQ018 TURQUOISE
KAQ003 WATER GREEN

KAQXSV
ML60

KIT MIXED MEDIA PASTE

A SELECTION OF 3 SMALL JARS-CONTAINING THE MOST POPULAR STAMPERIA PRODUCTS : CRAKLÉ PASTE, VOLUME PASTE AND GLOSSY GEL. ALL YOU NEED FOR YOUR MIXED MEDIA PROJECTS.



CRACKLÉ PASTE VOLUME PASTE GLOSSY GEL

K3PXMM
ML50

CRACKLÉ PASTE WHITE

SUITABLE FOR EVERY POROUS SURFACE. REQUIRED PRIMER ON SMOOTH SURFACES. YOU CAN COLOR IT WITH ACRYLIC COLORS, ACQUACOLOR AND MYSTIK INK. CAN BE DRIED WITH THE HAIR DRYER.



K3P37
ML150

GLOSSY GEL

GLOSSY GEL HEAVY BODY PASTE IS SHINY AND TRANSPARENT, EXTRA PLUMPING UP. IDEAL FOR RELIEF DECORATIONS.



K3P43
ML150

PRIMER

CAN BE APPLIED ON EVERY SURFACE (PLASTIC, IRON, GLASS...). USEFUL TO COVER THE AREAS THAT ARE NOT TOTALLY SMOOTH, IT ALLOWS THE COLOUR TO PERFECTLY ADHERE EVERYWHERE, WITHOUT CHANGING THE SHADES.



K3P28G
ML250

MIXED MEDIA GLUE

UNIVERSAL GLUE - WATER BASED. SUITABLE FOR ALL MATERIALS AND SURFACES.



DC28M
ML150

PURPURIN

EXTRA FINE METALLIC POWDER TRADITIONALLY USED BY GILDERS, IT NEEDS A MEDIUM TO BE FIXED ON THE SURFACE. IT CAN BE MIXED WITH ALCOHOL INK TO OBTAIN A GOLD LIQUID PAINT.



DP01B
GOLD - ML17

DP02B
SILVER - ML17

PASTA SCULTURA

PASTA SCULTURA WHITE. WATER-BASED. CONTAINS NATURAL FIBERS TO CREATE A VERY NATURAL VOLUME. IT CAN BE COLORED WITH ACRYLIC AND AQUACOLOR.



K3P52
ML150

STONE PAPER WASHABLE

SPECIAL PAPER MADE OF NATURAL FIBERS, EXTRA STRONG, DOES NOT TEAR, VERSATILE FOR ALL DECORATIONS! YOU CAN PIERCE, CUT, SEW, DIE-CUT IT AND EVEN DECORATE IT WITH RICE PAPER, STENCIL, ACRYLIC COLOURS. ONCE DECORATED IT CAN BE CLEANED IN THE WASHING MACHINE. BEFORE WASHING USE MIX MEDIA GLUE TO STICK PAPERS AND DECORATIONS.



DFPCA4

VINTAGE ANTIQUING PASTE

CAN BE USED ON ANY SURFACE. ONLY AFTER SEALING THE FINISHED WORK WITH A LAYER OF MIXED MEDIA GLUE YOU CAN PROCEED WITH ANTIQUING. SPREAD A GENEROUS LAYER OF THE PASTE AND THEN SWIPE IT OFF WITH A WET TISSUE. LET IT DRY.



KAOLBR
ML170

DYE INK PAD

ACID FREE, DRY INSTANTLY, ALCOHOL MARKER FRIENDLY. GREAT FOR STAMPING AND PERFECT FOR INK BLENDING. USE THE INK OVER STENCILS OR BLEND IT OUT TO OBTAIN AN AGING AND ANTIQUING EFFECT. ACTIVATES WITH WATER AND WORKS FOR LIFT COLOR TECHNIQUES.



WKPR02
COFFEE



WKPR12
TURQUOISE

SOFT CLAY

EXTRA LIGHT, SOFT, WHITE COLOUR MODELING CLAY. IT CAN BE ENGRAVED, IMPRESSED BY STAMPS AND WORKED TO CREATE 3D DECORATIONS. AIR-DRY. DRYING TIME: 24H ACCORDING TO THICKNESS.



K3P44
GR 160

WOODEN EFFECT SPATULA

SPECIAL SPATULA TO OBTAIN A WOOD EFFECT, USING ACRYLIC PAINTS, ALLEGRO OR VIVACE



KRP01

FLAT POINT BRUSH

HANGING BRUSH. USE IT FOR BACKGROUNDS



KR38

BLACK MATT SUPERBASE

BLACK AND MATT SUPERBASE FOR ANY SURFACES. WATER BASED. USE IT WITH STARDUST METALLIC PIGMENTS.



K3P68B
ML80

HALO PASTE KIT

SELECTION OF 4 SMALL JARS - 50ML. APPLY PASTE WITH SPATULA ON DARK SURFACE, PREFERABLY BLACK, USING STENCIL OR FREE-HAND. COLOR TRANSFORMS WHILE DRYING. DRY TIME 1-3 HOURS BASED ON PASTA THICKNESS. RESULT: TRANSLUCENT, GLOSSY EFFECT.



GOLD GREEN BLUE VIOLET

K3P70X
ML50

Complete your collection

STENCIL



KSTD115
CM 20x25



KSTD133
CM 20x25



KSTD149
CM 20x25



KSTD134
CM 20x25



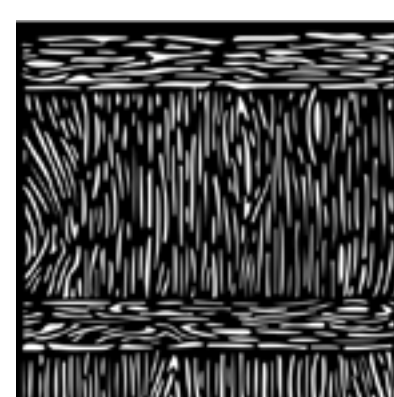
KSTD135
CM 20x25



KSTD146
CM 20x25



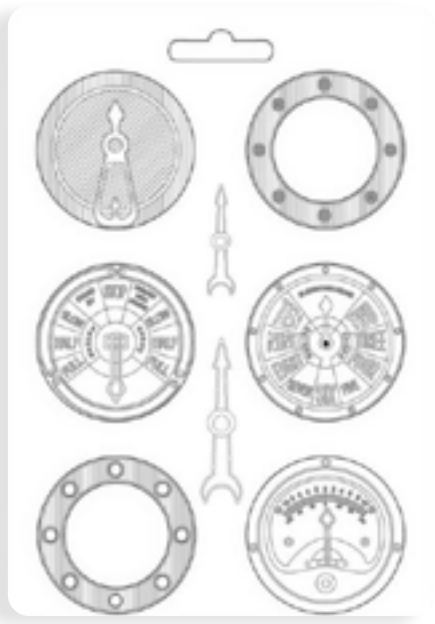
KSTDQ81
CM 18x18



KSTDQ86
CM 18x18

Complete your collection

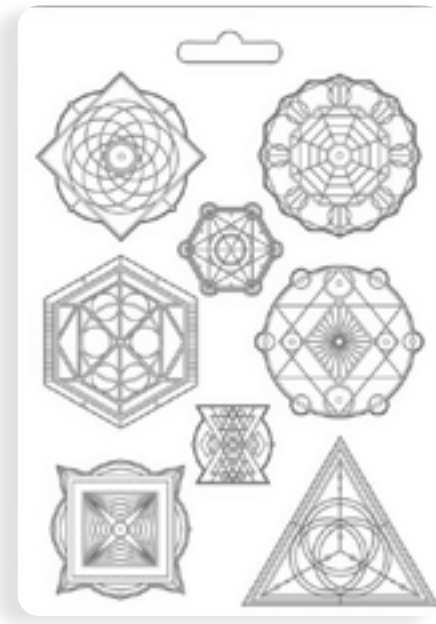
MAXI MOULD



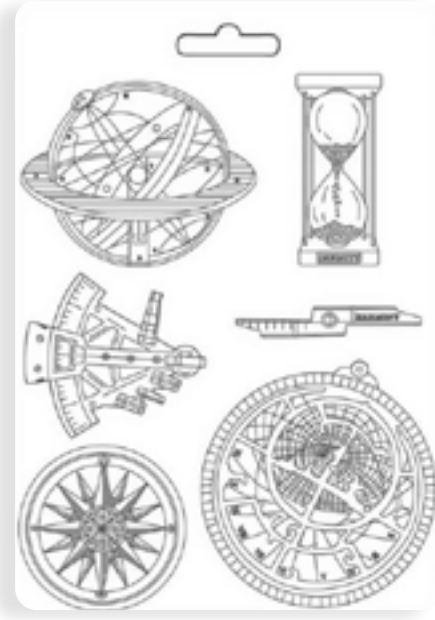
K3PTA4519



K3PTA4524



K3PTA4525



K3PTA4547



K3PTA4557



K3PTA490

MINI MOULD



K3PTA518



K3PTA5607



K3PTA5608



K3PTA5609



K3PTA561

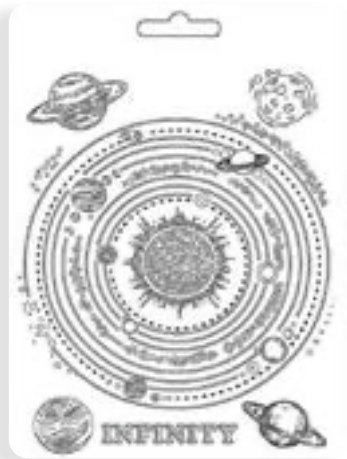
MINI MOULD



K3PTA5619



K3PTA563



K3PTA5632



K3PTA5652

SILICON MOULD



KACM04



KACM11



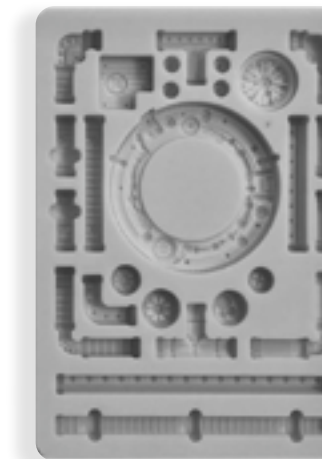
KACM12



KACM13



KACM14



KACM24



KACM25

DECORATIVE CHIPS



SCB65



SCB78



SCB91



SCB108



SCB163



SCB164



SCB171



SCB185

MIXED MEDIA STAMP



WTK184

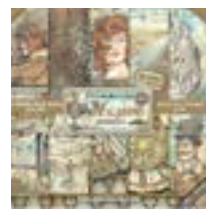
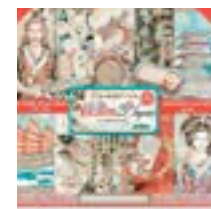
Add more Sir Vagabon' items

SCRAPBOOKING PAD

LARGE

SMALL

MINI



SBBL80

SBBL95

SBBL112

SBBS25

SBBS63

SBBXS08

SBBXS18

SCRAPBOOKING LOOSE SHEETS

COLLECTABLES



SBB745

SBB748

SBB749

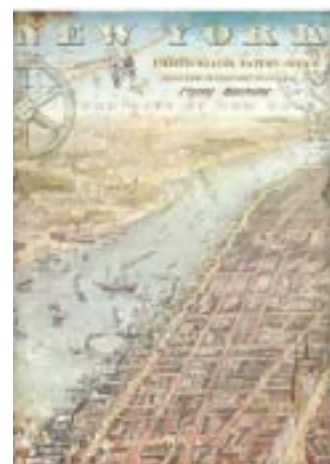
SBB750

SBBV12

SBBV16

RICE PAPER A4

CLEAR DIE CUT



DFSA4610

DFSA4698

DFSA4699

DFSA4700

DFSA4702

DFLDCP27

CHIPBOARD

MAXI MOULD



DFLCB16

DFLCB58

K3PTA486

K3PTA4508

K3PTA4509

STENCIL



KSTD106

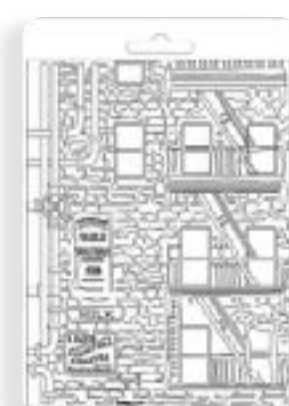
K3PTA4513

K3PTA4538

K3PTA4540



MINI MOULD



KSTD108

K3PTA591

K3PTA5623

K3PTA5624